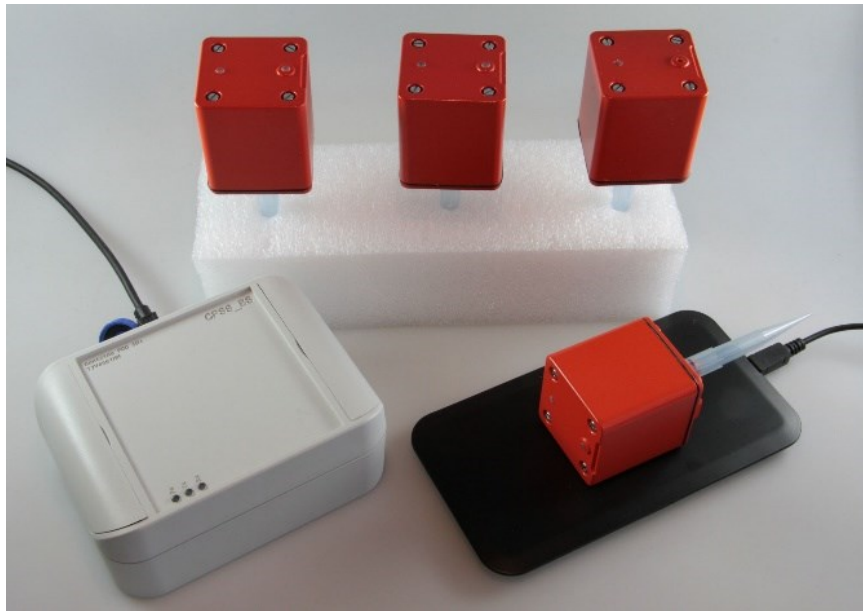
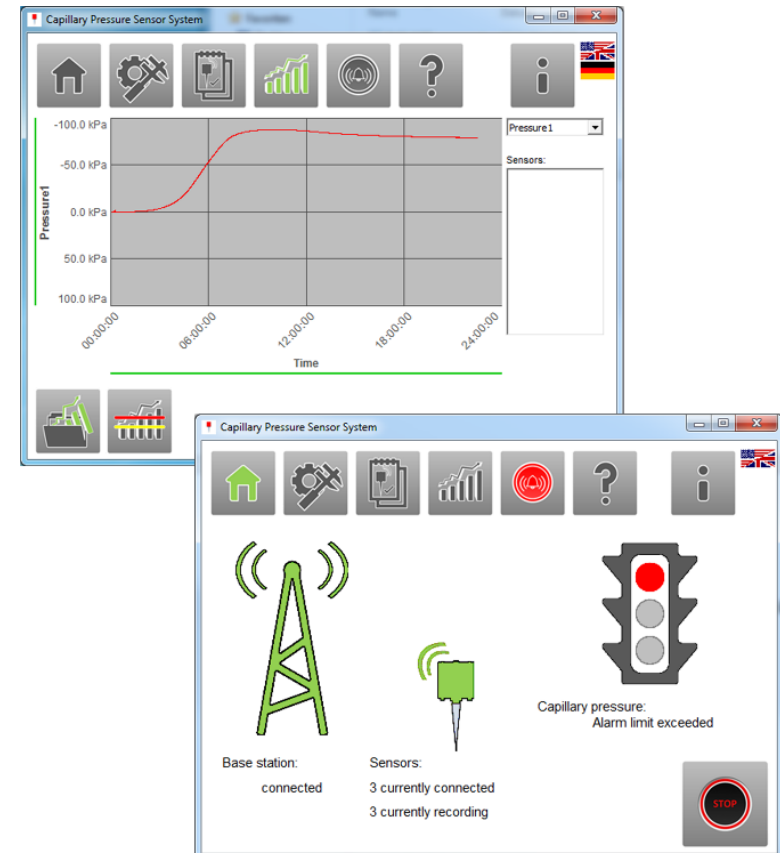
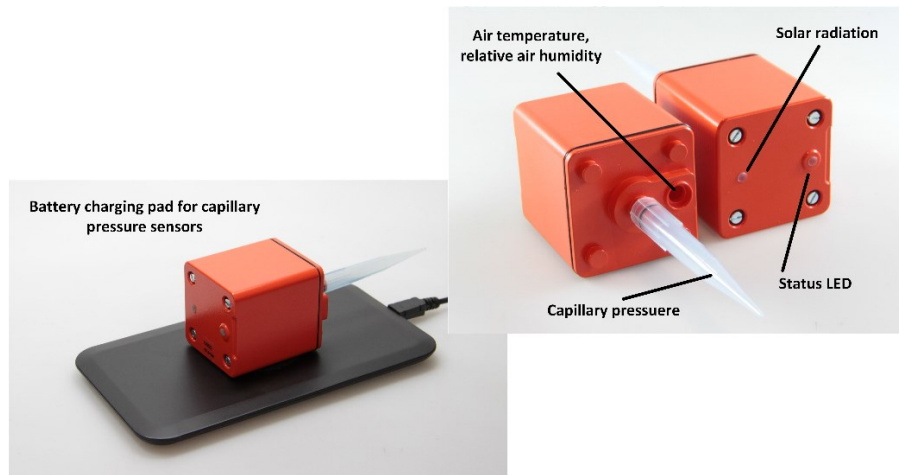

Capillary Pressure Sensor System (CPSS)



Some facts about the CPSS:

- The wireless capillary pressure sensors are sending the measured data to the base station via radio transmission (frequency 2.4 GHz, no permission required).
- The maximum radio transmission range of the sensors amounts to at least 60 m.
- With fully charged batteries, the wireless sensors may operate for at least 24 hours.
- The measured data may be displayed in real time and recorded.





The CPSS consists of

- 4 or 8 wireless sensors for measuring the capillary pressure in the liquid phase of plastic concrete,
- 1 base station which may be connected to a computer via USB,
- 4 or 8 charging pads for the wireless charging of the capillary pressure sensors,
- transport box,
- filling set,
- User Manual, Quick Guide, and software.